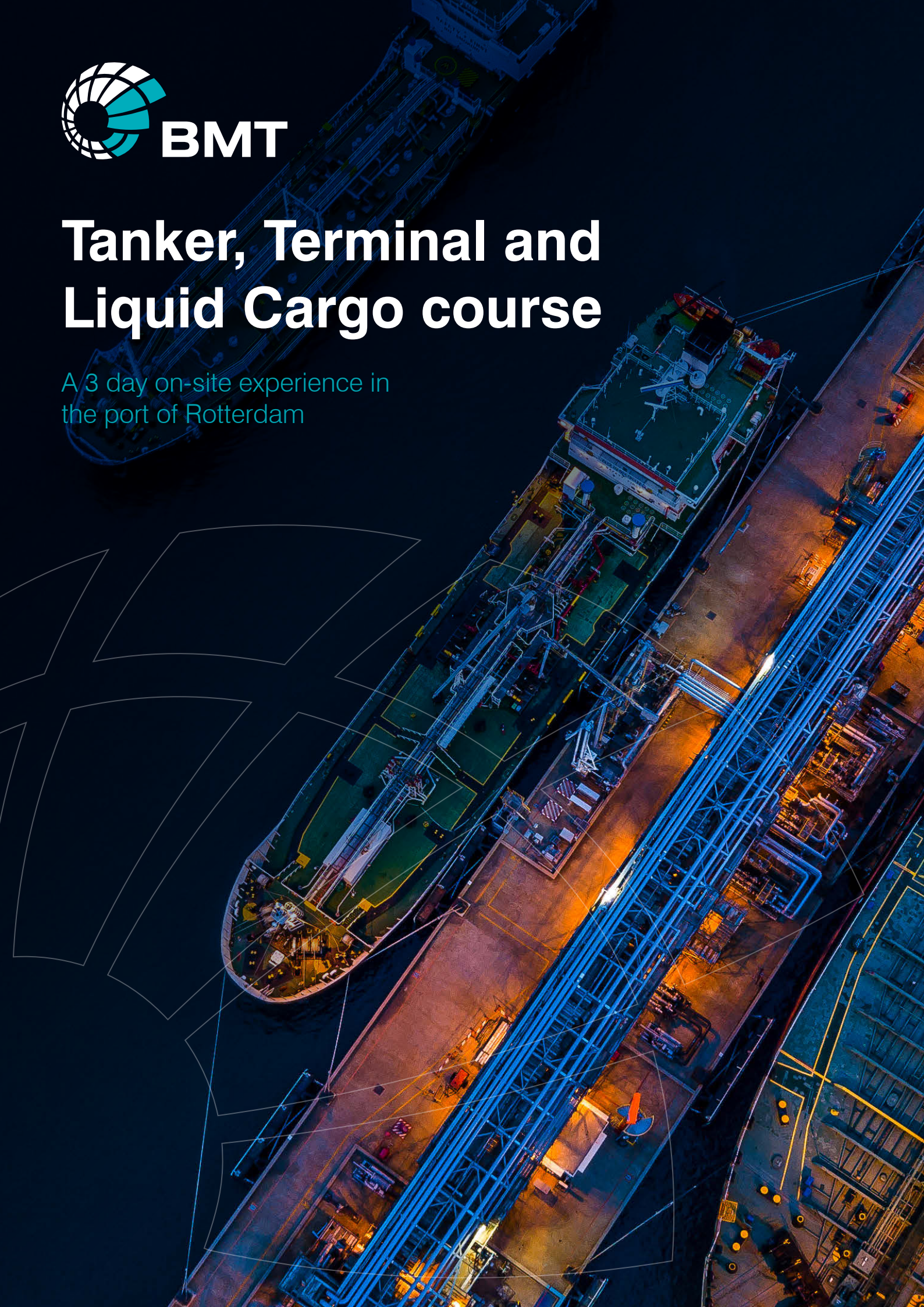




Tanker, Terminal and Liquid Cargo course

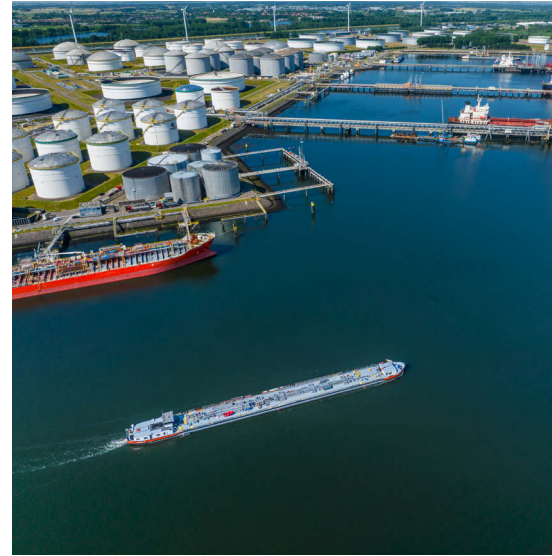
A 3 day on-site experience in
the port of Rotterdam



Objectives

We will take you on a journey through the Port of Rotterdam, the beating heart of Europe's petrochemical industry to give you an exclusive view of:

- The transport and handling of a wide variety of liquid products such as mineral oils, chemicals and vegetable / edible oils, as well as marine fuels and bio fuels
- The role of the terminal in the supply chain and operations
- Laboratory services (sampling and analysis)
- The role of cargo inspector
- Technical aspects of carrying liquid bulk cargo
- Technical systems on board tanker vessels



Join us in Rotterdam, the largest liquid cargo port in Europe!

BMT - having an office in Rotterdam, at the centre of liquid cargo products in Europe - offers you the unique possibility to learn all you want to know about this topic. From crude oil, gasoline, diesel and biofuels to chemicals, edible oils and fats: a whole series of liquid products are being transported through, handled and stored at the various terminals and other facilities.

While Rotterdam's oil terminal – with a yearly throughput of 95 to 100 million tons of oil – is still one of the largest (crude) oil terminals in the world, the capacity for biofuels has been increasing continuously: currently, five manufacturers of biodiesel, bioethanol and renewable diesel supply the European market.

The storage and handling facilities for edible oils and fats are also substantial: specialised tank storage companies offer specialised services. Furthermore, with these large facilities come innovative suppliers of supporting services, such as pumping systems, laboratories, etc. to which you will get exclusive access as well.



Programme

Crude oil terminal

The tour along the terminal that serves as the heart of the logistics chain between oil producers and oil refineries consist of a presentation, an overview of the terminal's loading and discharge, as well as the mooring facilities with their laser-controlled docking systems, and last but not least, the opportunity to climb the stairs of a terminal's 22-metre-high shore tank with its magnificent view.

Cargo reconditioning

What does it mean if a liquid product is "off specification"? In which cases is reconditioning considered to be an appropriate remedial action? Learn the answers to these and other questions during a visit to a company that takes an innovative approach to recovering and reprocessing contaminated or off-spec petroleum products and petrochemicals.

Pump systems

One highlight is a visit to the workshop of a main supplier of cargo pumping systems in the marine industry, best known for the development of the 'one-pump-per-tank' submerged cargo pumping system. You will get to see the system in operation in a test facility: a scale model of a cargo tank behind a glass wall – this allows you to see the cargo pump and a tank cleaning machine while operating!

Vegetable oils and fats

We will visit a terminal where numerous vegetable, edible and base oil products are stored, awaiting further dispatch by either vessels, barges, trucks or rail. During a tour around the terminal, you will see the different products as well as the loading and discharging facilities, including the cargo control room and the specific cargo handling particulars.

Laboratory

For a more analytical view on liquid cargoes we will visit one of the leading laboratories in the Rotterdam Botlek area to learn more about the role of the cargo inspector and to witness several analyses performed by laboratory analysts according to ASTM standards.

A ship's visit

Depending on availability we will also visit a tanker vessel.

Introduction to tanker, terminal and liquid cargo

The course is provided by marine surveyor Ivo Bezuijen (excursions) and BMT's Managing Director Dennis de Bruin (presentation).

The programme depends on the availability of our partners and may be subject to alterations.



Target audience

The course is especially relevant for claim handlers and marine underwriters, and other people employed in the tanker business.

Have you already attended our LNG and LPG Course? Then this Tanker, Terminal and Liquid Cargo Course is the perfect addition. (Please note that attendance of any of our other courses is by no means a requirement.)

Arrangements

- Each participant will receive a certificate of participation
- Per course, a maximum of eight participants can take part
- Necessary safety gear and suitable working clothes, as well as guided transportation to and from the port/ship will be provided
- BMT will host the lunch breaks and dinners
- The course starts on Tuesday at 18:00 hrs and ends on Friday at 13:00 hrs






For more information and reservations, please visit our website:

www.bmt.org/surveys/courses

We look forward to welcoming you to Rotterdam!

 www.bmt.org/linkedin

 www.bmt.org/youtube

 www.bmt.org/twitter